
	JAYAWANT SHIKSHAN PRASARAK MANDAL'S JAYAWANTRAO SAWANT COLLEGE OF PHARMACY & RESEARCH	
Prof. T. J.SAWANT D.E.E.B.E.(Elec.), MISTE Founder-Secretary	S. No. 58, Handewadi Road, Hadapsar, Pune- 411028. Phone : +91-020- 64005920 Tel Fax: +91-020-26970565 E-mail : jspm.jscopr@gmail.com Website : www.jspm.edu.in (Approved by PCI & AICTE, New Delhi, DTE, Govt. of Maharashtra, Mumbai, and Affiliated to Savitribai Phule Pune University, Pune) DTE Code: PH6387	Dr V. V. POTNIS M.Pharm., Ph.D. Principal

To,
The Coordinator,
NAAC, Bengaluru.

Subject: Proof of Teachers use ICT enabled tools for effective teaching-learning process.

Reference: 2.3.2 Teachers use ICT enabled tools for effective teaching-learning process.

Dear Sir/Madam,

2.3.2

- Relevant documents of the Teachers use ICT enabled tools for effective teaching-learning process.

Lecture delivered by Smart Board



Using Moodle for Notes

- Dashboard
- Site home
- Site pages
- My courses
 - PIC (Th) 2023-24
 - Participants
 - Badges
 - Competencies
 - Grades
 - General
 - Unit I
 - Unit II
 - Unit III
 - Unit IV
 - Unit V
 - PIC (Pr) 2023-24

Announcements

Unit I

Unit-I Impurities in pharmaceutical substances

Unit II

Acids, Bases & Buffers

Dental Products

Unit III

Gastrointestinal agents

Unit IV

Activate Windows
Go to Settings to activate

JSPM's Jayawantrao Sawant College of Pharmacy & Research, Hadapsar

- Home
- Dashboard
- Events
- My courses

Hide blocks

Site pages > Calendar

Events key

- Hide site events
- Hide category events
- Hide course events
- Hide group events
- Hide user events
- Hide other events

Upcoming events ▾ All courses ▾

Upcoming events

There are no upcoming events

Export calendar

Manage subscriptions

Activate Windows

- Dentin-

75 % mineral,
below enamel in crown and under Cementum
in root,
determines size and shape of tooth,
substructure below enamel.
gives flexibility and absorb forces without
fracturing.

- Cementum-

less than 75 % mineral.
helps to attach teeth to jaw bones
Minerals- Apatitecrystais (CaPO_4 and CaCO_3)
General formula- $\text{Ca}_5(\text{PO}_4)_3\text{OH}$

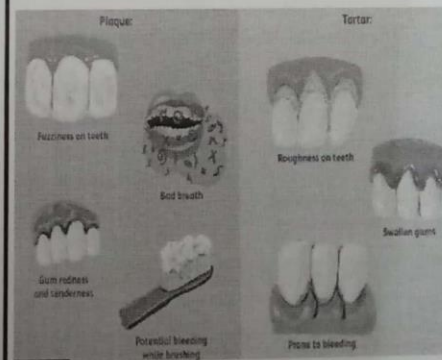
Dental Diseases:

- A. Dental Plaques-(Bacteria + food particles)
- 1. Soft Yellow sticky bio-film on enamel,
junction of enamel and gums margins.
- 2. consist of microorganism; extracellular
matrix (proteins, long chain polysaccharides
and lipids) and food particles.
- 3. Bacteria-converts carbohydrates to acids
(mostly lactic acid)
- 4. which causes demineralization of tooth,
micro-cavities and cavities.
- 5. Bacteria -Streptococcus Mutants,
Anaerobes- Actinobacteria, Fusobacterium



- B. Dental Calculus/Tartar-Hardened

- Dental Plaque, due to deposition of
minerals further on plaque. (mostly
consist of Octacalcium Phosphate)
(Bacteria + food particles+ Minerals in
food)



Vijayendra
Principal
Jayawantrao Sawant
College of Pharmacy & Research
Hadapsar, Pune - 411 028.